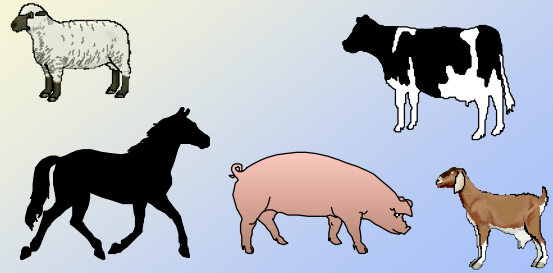


**E.H. CONSULTANCY**  
**EDDIE HARPER**



- NATIONAL CHAIRMAN RHA LIVESTOCK GROUP
- MEMBER OF FAWC (FARM ANIMAL WELFARE COUNCIL)
- CHAIRMAN AATA ANIMAL WELFARE COMMITTEE

**LIVESTOCK TRANSPORT**  
**PAST - PRESENT - FUTURE**



PAST



PRESENT



FUTURE

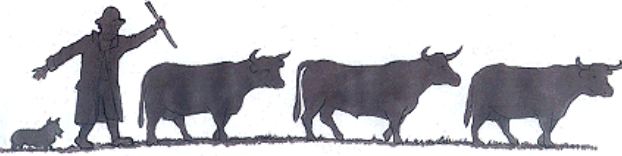


- **IN YEARS GONE BY LIVESTOCK (MAINLY CATTLE AND SHEEP) WAS DRIVEN ON FOOT TO THE NEAREST MARKET OR ABATTOIR . THIS COULD BE MANY MILES OR KILOMETRES AWAY AND COULD TAKE DAYS SOMETIMES WEEKS**

***EH***

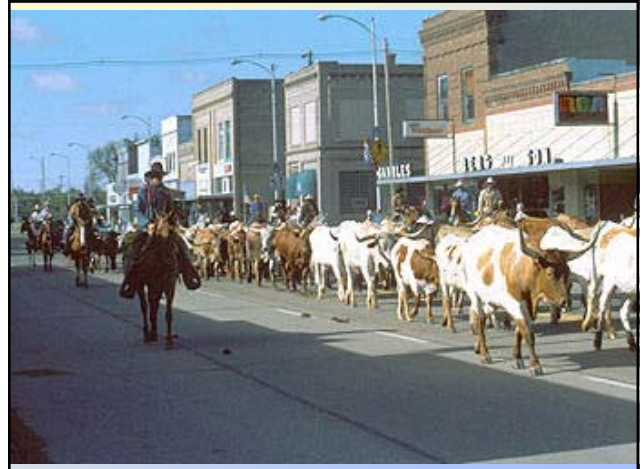
EDDIE HARPER - Livestock Transport Consultant

**THE PAST**



***EH***

EDDIE HARPER - Livestock Transport Consultant



***EH***

EDDIE HARPER - Livestock Transport Consultant



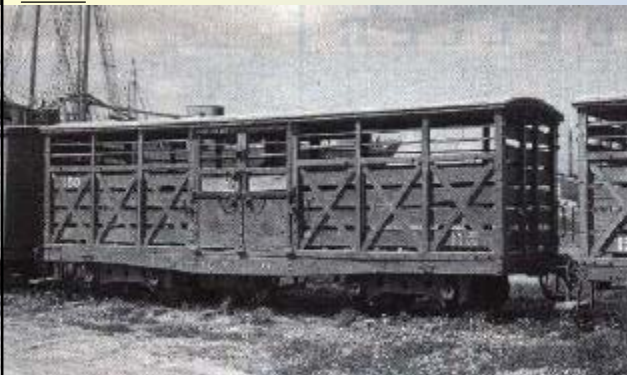
***EH***

EDDIE HARPER - Livestock Transport Consultant

- AS TIME WENT ON - THE TRAIN BECAME THE MODE OF TRANSPORT AND WAS ABLE TO TAKE VAST NUMBERS OF ANIMALS LONG DISTANCES IN RELATIVELEY SHORT TIMES.

***EH***

EDDIE HARPER - Livestock Transport Consultant



***EH***

EDDIE HARPER - Livestock Transport Consultant



- WITH THE COMBUSTION ENGINE  
ROAD TRANSPORT FOR LIVESTOCK  
BEGAN



***EH*** EDDIE HARPER - Livestock Transport Consultant

THREE DECKER OPEN ROOF



***EH*** EDDIE HARPER - Livestock Transport Consultant



***EH*** EDDIE HARPER - Livestock Transport Consultant



***EH*** EDDIE HARPER - Livestock Transport Consultant



- THE FOLLOWING ARE A VARIETY OF VEHICLES TRANSPORTING LIVE ANIMALS - SOME NOT ALWAYS SUITABLE FOR THE PURPOSE.



*Sale is the only purpose for keeping poultry, and vehicles are often used for delivering the broilers to wholesale poultry market*

**EH**



**EYE OPENER**

When it comes to moving animals, the usual advice is to call a professional. But Eddie Harper, a livestock transport consultant, says that's not always the best idea. He says that many people who transport animals on their own are not aware of the many risks involved. He says that many people who transport animals on their own are not aware of the many risks involved. He says that many people who transport animals on their own are not aware of the many risks involved.

**EH**

EDDIE HARPER - Livestock Transport Consultant



***EH*** EDDIE HARPER - Livestock Transport Consultant



***EH*** EDDIE HARPER - Livestock Transport Consultant



***EH*** EDDIE HARPER - Livestock Transport Consultant

## **PRESENT TRANSPORT**

- **THIS INVOLVES VEHICLES SPECIFICALLY BUILT FOR THE TRANSPORT OF ANIMALS WITH THE EMPHASIS ON THEIR WELFARE IN TRANSPORT NO MATTER HOW FAR THEY TRAVEL.**

***EH***

EDDIE HARPER - Livestock Transport Consultant

## MODERN VEHICLE DESIGN IN EUROPE NOW INCORPORATES

- AIR SUSPENSION
- FULLY LIFTING DECKS
- ON BOARD DRINKING SYSTEMS

LIFTING DECKS



ALL ALUMINIUM CONSTRUCTION  
ALLOWS HIGH STANDARDS OF  
BIO-SECURITY



DRINKERS FITTED



***EH*** EDDIE HARPER - Livestock Transport Consultant



**TYPICAL VEHICLE USED  
THROUGHOUT EUROPE**

***EH*** EDDIE HARPER - Livestock Transport Consultant



***EH*** EDDIE HARPER - Livestock Transport Consultant



**BOATS AND PLANES ALSO  
PLAY AN IMPORTANT PART IN  
THE TRANSPORT OF LIVE  
ANIMALS IN EUROPE AND ALL  
OVER THE WORLD.**



**ROLL ON ROLL OFF FERRIES  
PLAY A PARTICULARLY  
IMPORTANT PART IN THE  
MOVEMENT OF LIVESTOCK IN  
EUROPE  
WITH SOME OF THE NEW  
MEMBER STATES THIS WILL  
BE EVEN MORE IMPORTANT**



**AT PRESENT THE TIME SPENT ON A ROLL ON ROLL OFF FERRY HAS ALWAYS BEEN INCLUDED IN THE JOURNEY TIME - IN THE NEW PROPOSALS TIME SPENT ON THE FERRIES WILL BE REST TIME.**

## **A TYPICAL JOURNEY**

- A JOURNEY OF BREEDING PIGS FROM IRELAND TO GREECE
- APPROX 2500 MILES TRAVELLING
- INVOLVES 3 FERRY CROSSINGS
- IRELAND TO UK
- UK TO FRANCE
- ITALY TO GREECE

## **LIVESTOCK TRANSPORT IN THE FUTURE**



### EU COUNTRIES

COUNTRIES OF THE EU	EU ACCESSION COUNTRIES (2004)	EU CANDIDATE COUNTRIES
AUSTRIA	CYPRUS	BULGARIA
BELGIUM	CZECH REPUBLIC	ROMANIA
DENMARK	ESTONIA	TURKEY
FINLAND	HUNGARY	
FRANCE	LATVIA	
GERMANY	LITHUANIA	
GREECE	MALTA	
IRELAND	POLAND	
ITALY	SLOVAKIA	
LUXEMBOURG	SLOVENIA	
NETHERLANDS		
PORTUGAL		
SPAIN		
SWEDEN		
UNITED KINGDOM		

**THE PRESENT HOURS FOR THE TRANSPORT OF SHEEP AND CATTLE IN EUROPE ARE:-**

- 14 + 1 + 14 + 24 HOURS REST

**PIGS**

- 24 HRS TRAVELLING 24 HOURS REST

**THE NEW PROPOSALS FOR ALL SPECIES ARE :-**

- 9 + 2 + 9 + 12 HOURS REST

**PUBLIC OPINION AND PROPOSED LEGISLATION WILL DEMAND THAT LIVESTOCK IS TRANSPORTED IN THE FUTURE AT EVEN HIGHER STANDARDS THAN AT PRESENT**



**HOURS TRAVELLED, STOCKING DENSITIES AND VENTILATION WILL PLAY A VERY IMPORTANT PART IN THE FUTURE OF LIVESTOCK TRANSPORT**

**RESEARCH IS ONGOING INTO THE VENTILATION OF VEHICLES INVOLVED IN THE LONG DISTANCE TRANSPORT OF LIVESTOCK AIMED AT YET FURTHER ENHANCEMENT OF THE HEALTH AND WELFARE OF THE ANIMALS BEING TRANSPORTED**

## VENTILATION FANS



**ALL VEHICLES WILL BE REQUIRED  
TO HAVE MONITORING SYSTEMS  
IN THE CAB TO RECORD DATA FOR  
THE DURATION OF THE JOURNEY**

***EH***

EDDIE HARPER - Livestock Transport Consultant

## IN CAB MONITORING



REPRODUCED WITH KIND PERMISSION OF PIC

***EH***

EDDIE HARPER - Livestock Transport Consultant

## IS IT A LIVESTOCK VEHICLE ?



REPRODUCED WITH KIND PERMISSION OF PIC

***EH***

EDDIE HARPER - Livestock Transport Consultant

## SAME VEHICLE



REPRODUCED WITH KIND PERMISSION OF PIC

***EH***

EDDIE HARPER - Livestock Transport Consultant

- ONE THING THAT HAS ALWAYS BEEN IMPORTANT IS COMPETENT HANDLERS WHETHER ON HORSEBACK OR USING HORSEPOWER

**ARTICLES 6 AND 16 OF THE NEW  
PROPOSAL IN EUROPE STATE THAT :-**

**NO PERSON SHALL TRANSPORT  
LIVESTOCK BY ROAD UNLESS HE  
HOLDS A TRAINING CERTIFICATE**

**DRIVER TRAINING**



- **WHATEVER LEGISLATION IS MADE IN  
THE FUTURE FOR THE TRANSPORT OF  
LIVE ANIMALS IT MUST BE MADE WITH  
SOUND SCIENTIFIC EVIDENCE WHILST  
AT THE SAME TIME BEING PRACTICAL  
AND ENFORCEABLE**

**IT IS NO GOOD MAKING NEW  
LEGISLATION WITHOUT  
BEING ABLE TO ENFORCE IT**

● GPS TRACKING



**NO MATTER WHAT LEGISLATION  
COMES FORWARD -  
THE **WELFARE** OF THE ANIMALS MUST  
BE  
**THE PRIME OBJECTIVE.****

- WITH ALL THIS MODERN TECHNOLOGY AVAILABLE MAYBE WE WILL COME TO THE POINT WHERE EVEN THE MOVEMENT OF ANIMALS AS WE KNOW IT WILL CHANGE
- ALL THE TALK IS OF GM TECHNOLOGY
- **COULD IT ALREADY BE HERE?**

***EH*** EDDIE HARPER - *Livestock Transport Consultant*



**THANK YOU**



**EDDIE HARPER**