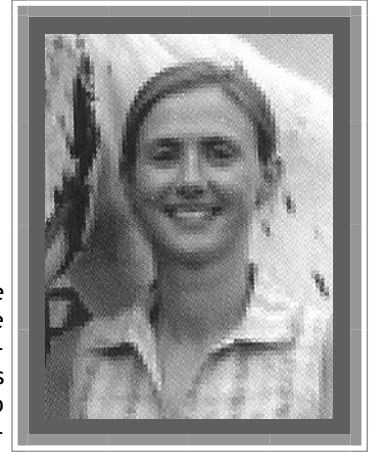


Joanne WHITE

International League for the Protection of Horses (ILPH)

“Training & Assessment of Equine Haulers”

In 1927, Ada Cole - a woman of considerable drive and determination, founded the International League for the Protection of Horses. As a result of the sights that Ada Cole witnessed on the docks of Antwerp, she was compelled to stop the suffering of old work-worn, weary British horses at the end of their life, forced to stumble across the cobbles taking their final steps to the slaughterhouse. It was these visions that stirred Ada Cole to start the campaign against the live export of horses for slaughter from the UK, and the long-distance transport of live horses, ponies and donkeys into and across Europe for slaughter.



This work continues and 77 years later the ILPH are still campaigning on behalf of horses destined for slaughter. Fortunately, much has improved since Ada Cole's day, and the ILPH has been instrumental in achieving many of these successes. In 1937 ILPH Honorary Director Sir George Cockerill MP, drafted and achieved the introduction of the Exportation of Horses Act, which effectively stopped the live trade in exporting British horses and ponies abroad for slaughter.

Since that time, the ILPH have increased their efforts in trying to improve the lot of the horse transported long-distances for slaughter. The ILPH remains focused on its long-term goal of a ban on the long-distance transport, but recognises this is still a long way off. Priding itself in being a pragmatic organisation, the ILPH's medium-term focus is on trying to achieve welfare improvements, and at this current time it is working extremely hard to ensure that the proposed Regulation on the Protection of Animals During Transport contains serious improvements that will alleviate current suffering.

To achieve these goals, the ILPH works through a combination of political lobbying, research and by publicising the issues and the campaign. It has been extremely active in lobbying the British Government, the European Commission, European Parliament, Member States, Acceding Countries and Third Countries on this issue. The ILPH has presented supporting evidence and information collected from the field of the suffering currently endured by horses transported into and across Europe to slaughter, where animals travel for days with little or no water, food or rest, in extremes of temperature.

Over the years, the ILPH has gained a great deal of experience, which it has used to present and reinforce its recommendations for welfare improvements. These have been presented to the EU in the hope that they will be accepted. Unless dramatic improvements are introduced to reduce journey lengths, provide proper rest and adequate provisions for feeding and watering, and improve the overall conditions under which horses are transported to slaughter, horses will continue to suffer needlessly as a consequence of this trade.

Horses have been a passion throughout Jo White's life. Having joined the International League for the Protection of Horses from a diverse equine background of lecturing in Equine Studies at Further and Higher Education level, and working as an Editor of a number of horse sport and interest magazines and websites; to holding the position of a Project Manager writing, producing, and marketing equine distance learning material and from a practical basis as an instructor, rider, stable manager and, originally groom - her commitment to equine welfare has been a constant throughout her career.

Ms Joanne WHITE
International League for the Protection of Horses (ILPH)
Campaigns Manager
Anne Colbin House, Snetterton
Norwich, Norfolk NR16 2LR England, UK
Direct Tel: + 44 0870 366 6939
Fax: + 44 0870 904 1927
joanne@ilph.org
www.ilph.org

Jo White attended Warwickshire College of Agriculture, where she obtained her HND and Degree in Equine and Business Studies, as well as the British Horse Society Intermediate Stable Managers, Stage IV Riding and BHSAL examinations. She has competed in the disciplines of dressage, showjumping, hunter-trials, sidesaddle and showing, and currently have a young horse which she hope to compete.

As the Campaigns Manager, I co-ordinate, liaise and manage the ILPH's campaigns. Our major focus remains the campaign to stop the long-distance transport of live horses for slaughter into and across Europe, and to ensure British horses and ponies are protected against live export to slaughter abroad. This work includes lobbying the EU and British Government; undertaking field observations and research; and raising the profile of the campaign in the public and political eye.